



**PT SUPREME CABLE**

MANUFACTURING & COMMERCE Tbk.

(PT SUCACO Tbk.)



## Product Catalogue

# PHOTOVOLTAIC SOLAR CABLE

### H1Z2Z2-K 1500 V DC

**BS EN 50618, IEC 62930, IEC 60228, IEC 60332-1**

**Main Uses :** in used as Photovoltaic cable between solar modules and inverters, solar cable intended for the interconnection with in photovoltaic systems such as solar panel arrays (solar farms, rooftop solar installations and floating plants). Suitable for permanent use outdoor and indoor, for free movable, free hanging and fixed installation.

Installation also in cable trays, conduit and trunking on, in or under plaster as well as in appliances. suitable for application in/at equipment with protective insulation (Protection class II), for installations where flame retardant, fire smoke emissions and toxic fumes create a potential risk to life and equipment.

The cable are designed to operate at a normal maximum conductor temperature of 90°C and for 20,000 hours up to 120°C

#### CONSTRUCTIONS

##### Conductor

Tinned fine stranded copper conductor according IEC 60228, Flexible Class 5

##### Insulation

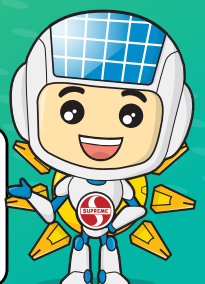
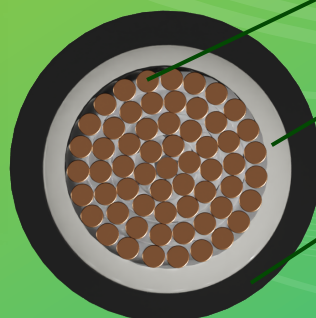
Cross-linked halogen free  
Colour : Natural

##### Outer Sheath

Cross-linked halogen free  
Flame retardant

Colour : Black or Red \*)

\*) Other colours available on request



## CHARACTERISTICS

### Voltage Rating (Uo/U)

AC or DC : 1000 V AC or 1500 V DC  
Max Voltage (Umax) : 1800 V DC (Conductor/ Conductor)

### Test Voltage

AC : 6.5 kV / 5 Min. 50 Hz

### Temperature range

Ambient temperature : - 40°C Up to + 90°C  
Max. temperature : + 120°C (For 20,000 h)

### Bending radius

Fixed installation > 5 x Overall diameter (Ø)  
Flexing > 10 x Overall diameter (Ø)

### Environmental Conditions

Weathering, Ultra violet (UV), Ozone Resistance,  
Acid & Alkaline Resistance

## PROPERTIES

- Flame retardant *acc to IEC 60332-1-2*
- Low smoke emission *acc to IEC 61034*
- Zero halogen *acc to IEC 60754-1*
- Low corrosive gases emission  
*acc to EN 60754-2 / IEC 60754-2*
- Complies with protection class II
- Double insulation,



### DIMENSIONAL DATA

Nominal cross-sectional area	Nominal Thickness		Approximately		Standard delivery length
	Insulation	Outer sheath	Overall diameter	Net Weight	
mm <sup>2</sup>	mm	mm	mm	Kg/Km	m
1.5	0.7	0.8	5.0	34	1000
2.5	0.7	0.8	5.4	45	1000
4	0.7	0.8	5.8	62	1000
6	0.7	0.8	6.3	80	1000
10	0.7	0.8	7.4	123	1000
16	0.7	0.9	9.0	200	1000
25	0.9	1.0	11.1	308	1000
35	0.9	1.1	12.5	403	1000
50	1.0	1.2	15.0	575	1000
70	1.1	1.2	16.6	740	1000
95	1.1	1.3	19.5	962	1000
120	1.2	1.3	21.0	1206	500
150	1.4	1.4	23.0	1500	500
185	1.6	1.6	26.5	1846	500
240	1.7	1.7	29.0	2385	500

### ELECTRICAL DATA

Nominal cross-sectional area	Resistance at 20°C		Current carrying capacity at 60°C
	DC conductor max.	Insulation min.	Single cable free in air
mm <sup>2</sup>	Ω/km	M.Ω.km	A
1.5	13.7	1050	30
2.5	8.21	862	41
4	5.09	709	55
6	3.39	610	70
10	1.95	489	98
16	1.24	393	132
25	0.795	395	176
35	0.565	335	218
50	0.393	314	276
70	0.277	291	347
95	0.210	258	416
120	0.164	249	488
150	0.132	260	566
185	0.108	268	644
240	0.0817	249	775

Note : This is only general information. For other specific requirement, please contact our marketing.



**SUPREME CABLE**

Head Office :  
Jl. Kebon Sirih No. 71, Jakarta 10340  
Phone : (62-21) 3100525  
Website : [www.sucaco.com](http://www.sucaco.com)

Marketing Office :  
Jl. Daan Mogot Km. 16, Jakarta 11850  
Phone : (62-21) 5402066, 6190044  
E-mail : [sales@sucaco.com](mailto:sales@sucaco.com)